

This is not an offer for sale or lease. No offer for sale or lease may be made, and no offer for purchase or lease may be accepted prior to issuance of an Arizona Public Report.

Just Listed
9+ Acre Parcel with
Final Plat
for 6 Lots

Lisa & Matt Lucky

See LisaLucky.com for
Virtual Tours & More.

Estada de Las Piedras

*North of Westland on Hayden Rd
Next to Boulders Golf Course*



Illustration of entrance - subject to change.



Lisa & Matt Lucky, PC

Associate Broker

Diamond Producer - Top One Percent

Office: 480 473-5486

Mobile: 602 320-8415

Website: LisaLucky.com

Russ Lyon | Sotheby's International Realty
8852 E. Pinnacle Peak Rd, J-2
Scottsdale, Arizona 85255

*Since 1947 - Our name is synonymous with
fine properties.*



Get "Lucky" In
Real Estate

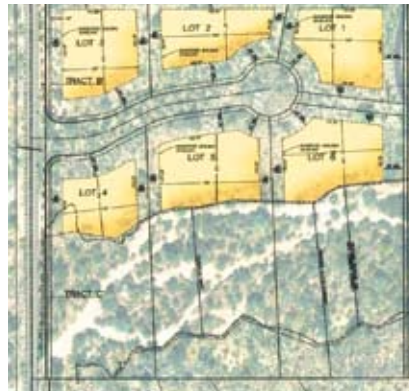
North Scottsdale

Estada de Las Piedras - North Scottsdale

This undeveloped parcel recently received final plat approval for a 6-lot subdivision.

This gated subdivision will offer premium home sites with mountain views in all directions.

Located on Hayden Road between Black Mountain and Westland Road, in Scottsdale - Adjacent to The Boulders.



Call Today

▶▶▶▶ Matt Lucky (480) 390-0445
Lisa Lucky (602) 320-8415