



*Elevated custom home
with commanding curb appeal*

North Scottsdale
GLENN MOOR AT TROON VILLAGE

The Luckys
NORTH SCOTTSDALE



Russ
Lyon

Sotheby's
INTERNATIONAL REALTY

10801 E Happy Valley Road 133
GLENN MOOR AT TROON VILLAGE

3 Bed + Den | 3.5 Bath | 3 Car
3,944 SQ FT | MLS 5703132

STYLISH CHEF'S KITCHEN

Located in the upscale guard-gated community of Glenn Moor at Troon Village, this custom home features clean lines and walls of windows to frame up-close views of the McDowell and Troon Mountains.

The large circular drive leads you to the home on an elevated setting framing the mountains beyond with commanding curb appeal.

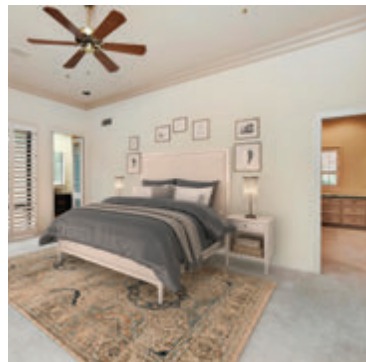
The side entry three car garage with additional parking and an elevator to the main level of the house is perfect for a car enthusiast.

Mature, lush desert landscaping enhance the exterior staircase and multiple front patios and covered porches are perfect for relaxing or taking in the gorgeous Arizona sunsets.

Formal living and dining spaces feature high ceilings with coffered and beamed detailing and ambiance-creating fireplaces.

The kitchen is a draw for the home chef as function and style couple to create a workspace that is a true pleasure. With details such as herringbone wood floors, the kitchen truly stands out as a beautiful feature of the home.

Indoor spaces flow out onto an expansive patio where residents and guest can relax and take a breath of fresh Sonoran Desert breezes. Bring your decorator and make this home your own!



Lisa | Matt | Laura

The Luckys
NORTH SCOTTSDALE

When it comes to the North Scottsdale lifestyle and area Real Estate, The Luckys are proud to be the eminent source for their clients.

With 100s of millions of dollars in sales under their belts, The Luckys are honored to be reputed as the most proficient and skilled in the industry.

Synonymous with fine properties



Russ
Lyon

Sotheby's
INTERNATIONAL REALTY



Lisa 602.320.8415 | Matt 480.390.0445 | Laura 480.390.5044 | Lucky@RussLyon.com

View our luxury listings at LisaLucky.com

7669 E Pinnacle Peak Road, Suite 110 | Scottsdale, AZ 85255