

10615 E Hedgehog Place
 Scottsdale, Arizona 85262

Tierra Encantada

at Pinnacle Canyon - Troon North

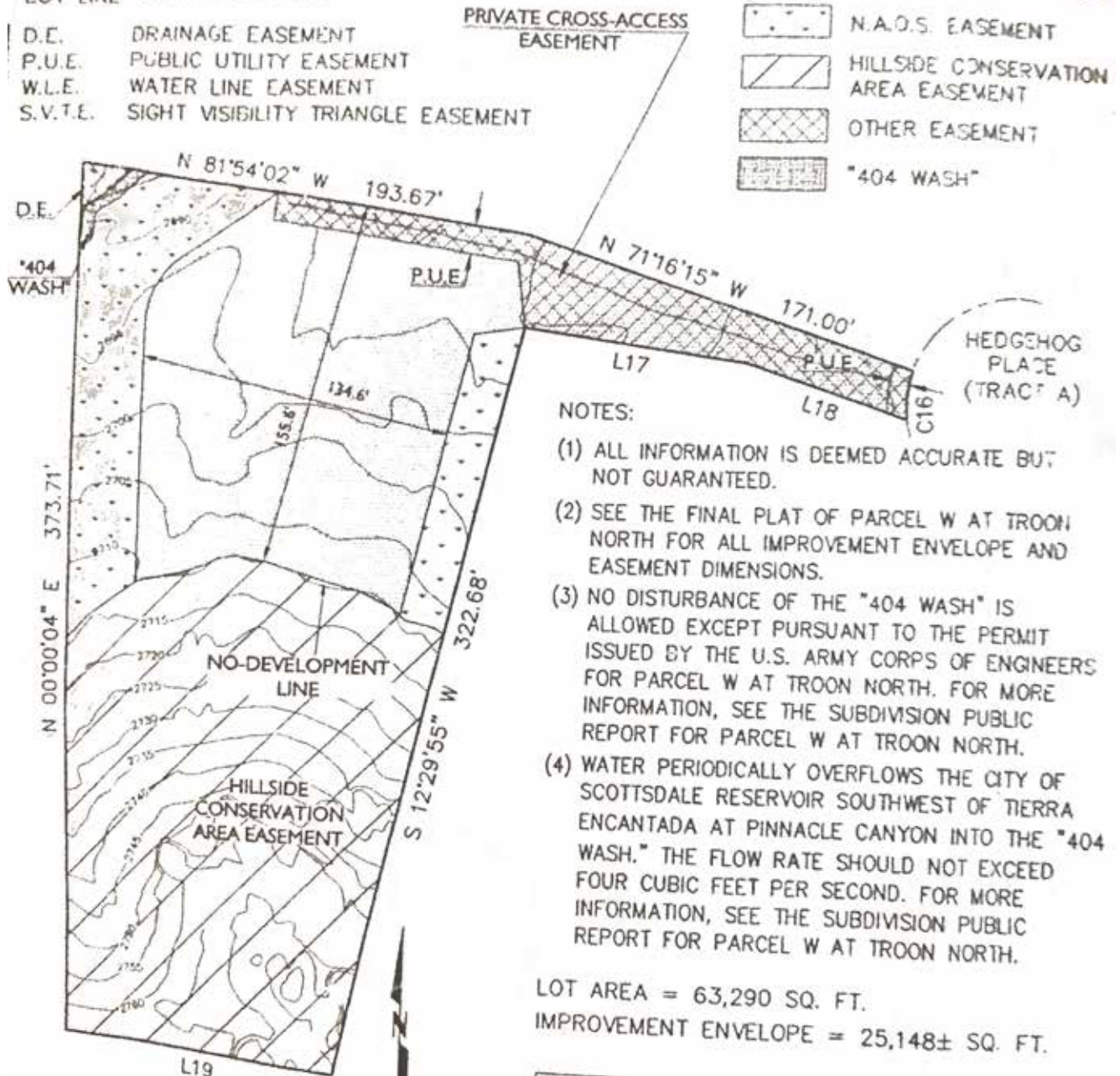
LOT 8 TIERRA ENCANTADA AT PINNACLE CANYON

LEGEND:

LOT LINE

D.E. DRAINAGE EASEMENT
 P.U.E. PUBLIC UTILITY EASEMENT
 W.L.E. WATER LINE EASEMENT
 S.V.T.E. SIGHT VISIBILITY TRIANGLE EASEMENT

IMPROVEMENT ENVELOPE
 N.A.O.S. EASEMENT
 HILLSIDE CONSERVATION AREA EASEMENT
 OTHER EASEMENT
 "404 WASH"



NOTES:

- (1) ALL INFORMATION IS DEEMED ACCURATE BUT NOT GUARANTEED.
- (2) SEE THE FINAL PLAT OF PARCEL W AT TROON NORTH FOR ALL IMPROVEMENT ENVELOPE AND EASEMENT DIMENSIONS.
- (3) NO DISTURBANCE OF THE "404 WASH" IS ALLOWED EXCEPT PURSUANT TO THE PERMIT ISSUED BY THE U.S. ARMY CORPS OF ENGINEERS FOR PARCEL W AT TROON NORTH. FOR MORE INFORMATION, SEE THE SUBDIVISION PUBLIC REPORT FOR PARCEL W AT TROON NORTH.
- (4) WATER PERIODICALLY OVERFLOWS THE CITY OF SCOTTSDALE RESERVOIR SOUTHWEST OF TIERRA ENCANTADA AT PINNACLE CANYON INTO THE "404 WASH." THE FLOW RATE SHOULD NOT EXCEED FOUR CUBIC FEET PER SECOND. FOR MORE INFORMATION, SEE THE SUBDIVISION PUBLIC REPORT FOR PARCEL W AT TROON NORTH.

LOT AREA = 63,290 SQ. FT.
 IMPROVEMENT ENVELOPE = 25,148± SQ. FT.

LINE	BEARING	DISTANCE
L17	S 82°02'39" E	93.81
L18	S 71°16'15" E	71.00
L19	N 86°09'23" W	122.00

CURVE	ARC	DELTA	RADIUS
C16	20.72	26°23'16"	45.00

SCALE: 1" = 60'
 MAY 12, 2004

GILBERTSON ASSOCIATES inc.
 consulting civil engineers & land surveyors
 8802 East Princess Drive · Scottsdale, Arizona 85255-5468 480/807/2244



Russ Lyon | **Sotheby's INTERNATIONAL REALTY**

602-320-8415
 Lucky@RussLyon.com
LisaLucky.com

The Luckys
 NORTH SCOTTSDALE