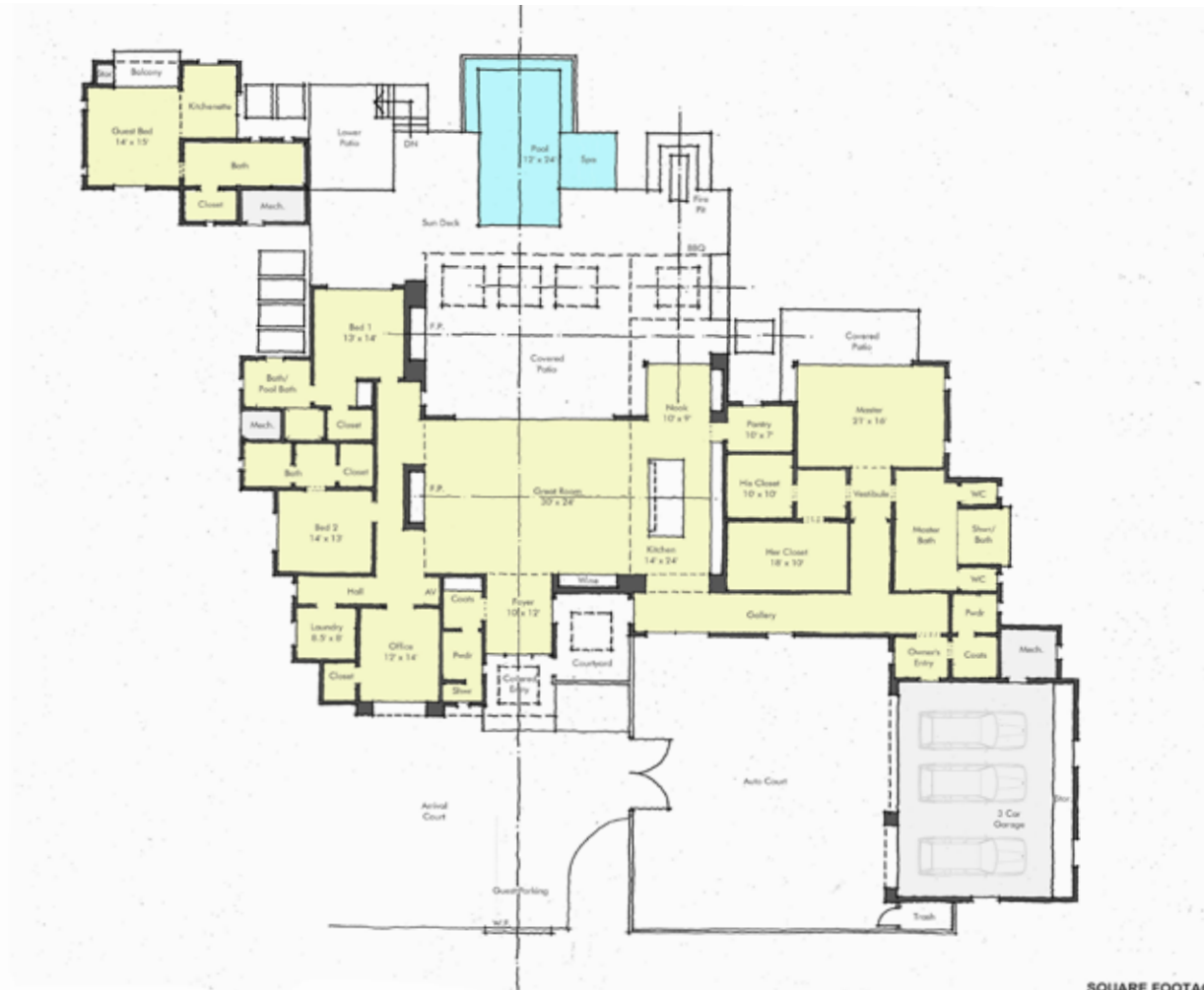


Windy Walk Estates

at Troon Village



Floor Plan (Bubble)



SQUARE FOOTAGES - Feb. 06, 2020

GRAND TOTAL (CONDITIONS)	4,800 SQ. FT.
POOL	400 SQ. FT.
COVERED PATIO	500 SQ. FT.
TOTAL (GRAND TOTAL, UNCONDITIONS)	5,700 SQ. FT.
UNFINISHED MECHANICAL STORAGE	1,200 SQ. FT.
COVERED PORCH	1,000 SQ. FT.
TOTAL (GRAND TOTAL, UNCONDITIONS)	6,900 SQ. FT.
TOTAL AREA UNDER ROOF	1,100 SQ. FT.

The information contained on this sheet is conceptual and intended for general use only.



WINDY WALK LOT 22 TROON, SCOTTSDALE, AZ

February 05, 2020



Russ
Lyon

Sotheby's
INTERNATIONAL REALTY

Cell: 602-320-8415
E-mail: Lucky@RussLyon.com

26375 N 106th Way
Scottsdale, Arizona 85255